

CAFMS Newsletter

Consortium of Appalachian Fire Managers and Scientists

A JFSP KNOWLEDGE EXCHANGE CONSORTIUM



March 28, 2012

Volume 2 Issue 1

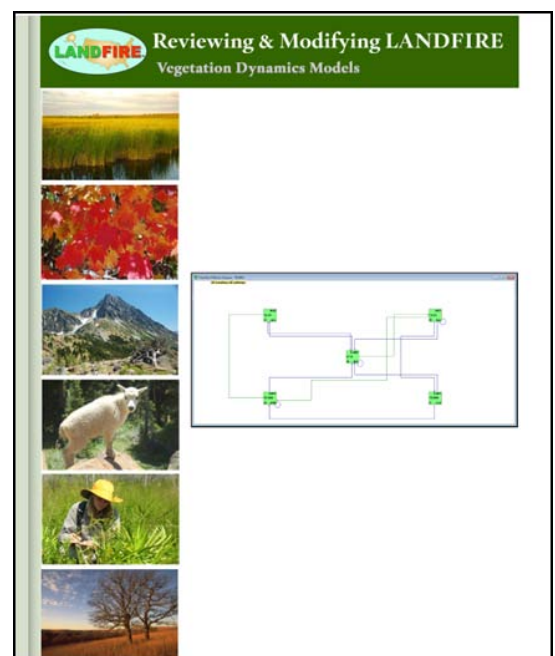
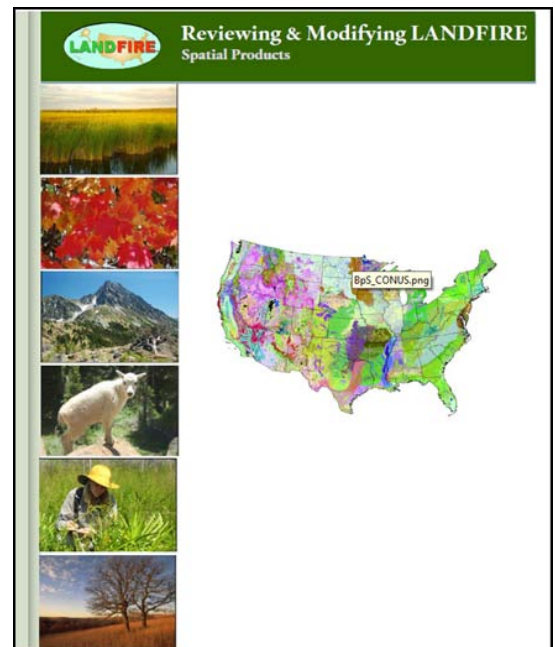
Two new user support guides are available from LANDFIRE.

Wall-to-wall spatial data and ecological models of vegetation for the U.S. are freely available online from [LANDFIRE](#) and NOW there are [support materials](#) to help end users apply them to real world fire and land management problems. LANDFIRE datasets include current vegetation, historic vegetation and a suite of fuel-related products including the original 13 and the new 40 fire behavior fuel models, forest canopy bulk density, cover, height and much more. Check out the in-depth guides, watch the how-to videos and use the step-by-step tutorials to get the most out of these datasets.

In 2012 we plan to expand our support offerings. Here's what is available now:

Three "How-to" User Guides:

- [Reviewing & Modifying LANDFIRE Vegetation Dynamics Models](#)
- [Reviewing & Modifying LANDFIRE Spatial Products](#)
- [Adapting LANDFIRE Vegetation Dynamics Models](#)



LANDFIRE continued:

Six Videos/Tutorials:

- [Overlay Grids Using the "Combine" Function](#)
- [Calculate the Area for Each Type Mapped in a Grid](#)
- [Editing Raster Attributes](#)
- [Making a New Raster](#)
- [Introduction to Analyzing Ecosystem Health](#)
- [Review and Modify FRCC Mapping Tool Reference Conditions](#)

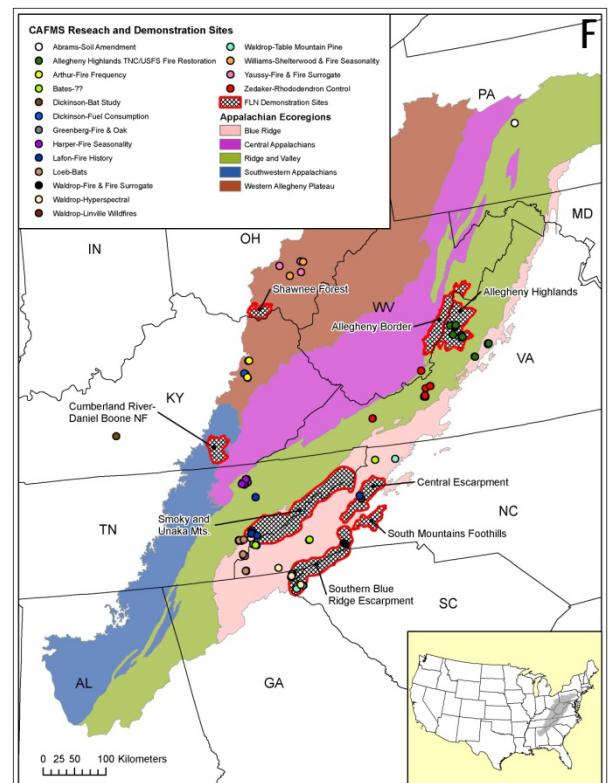
These new materials build on existing [LANDFIRE courses](#). Need more help? Contact any member of The Nature Conservancy's [LANDFIRE Team](#) or the LANDFIRE helpdesk (helpdesk@landfire.gov).

In addition to these new user-support materials, LANDFIRE recently released improved and updated spatial products current through 2008 on its [Data Distribution Site](#). The updates include enhanced mapping of growth changes in shrub and wetland cover types and incorporation of recent disturbance and treatment information.

LANDFIRE can't replace good local data but you may find it useful for cross-boundary analysis, filling gaps or supplementing local datasets. What's more, we can help you do it!

CAFMS Wants You On Our Map!

We currently have a working map of the fire research and management sites in our region. The problem is we don't have everything. We need your help to fill in what's going on in the Appalachians. Once we update the map with new information we will put it on www.CAFMS.org. We are in the process of making signs to go on the ground at some of the more notable sites around the region. Do you work on a site that you would like to put on our map? Contact me at helen@cafms.org.



What have we been up to?

Thanks to all who attended our Smoke in the Mountains workshop in February and our Forest Management Impacts on Timber Rattlesnakes workshop in March. We enjoyed meeting with the Tennessee Prescribed Fire Council and the Cherokee National Forest Fire Management Team as well. Let us know how we can be involved in your fire meetings! We have heard a lot of good stories about successful prescribed fires in the Appalachians this spring. Check out a couple photos below! If you have a good story or photos we would love to share them in the newsletter!



Prescribed fire for research on the Green River Gamelands near Saluda, NC. This land is owned by the NC Wildlife Resources Commission.



Communicate With Us!



Find us on twitter @APfirescience or find us on Facebook by searching Consortium of Appalachian Fire Managers and Scientists.

Join CAFMS:

The consortium is for all land managers and researchers in the region who deal with any aspect of fire. To join, simply provide us with some contact information at the web site listed below.

<https://spreadsheets.google.com/viewform?formkey=dDNiUnFrYzNNVU00dkxka1hKM2p0cFE6MQ>

www.CAFMS.org

Helen Mohr helen@cafms.org

Tom Waldrop tom@cafms.org

